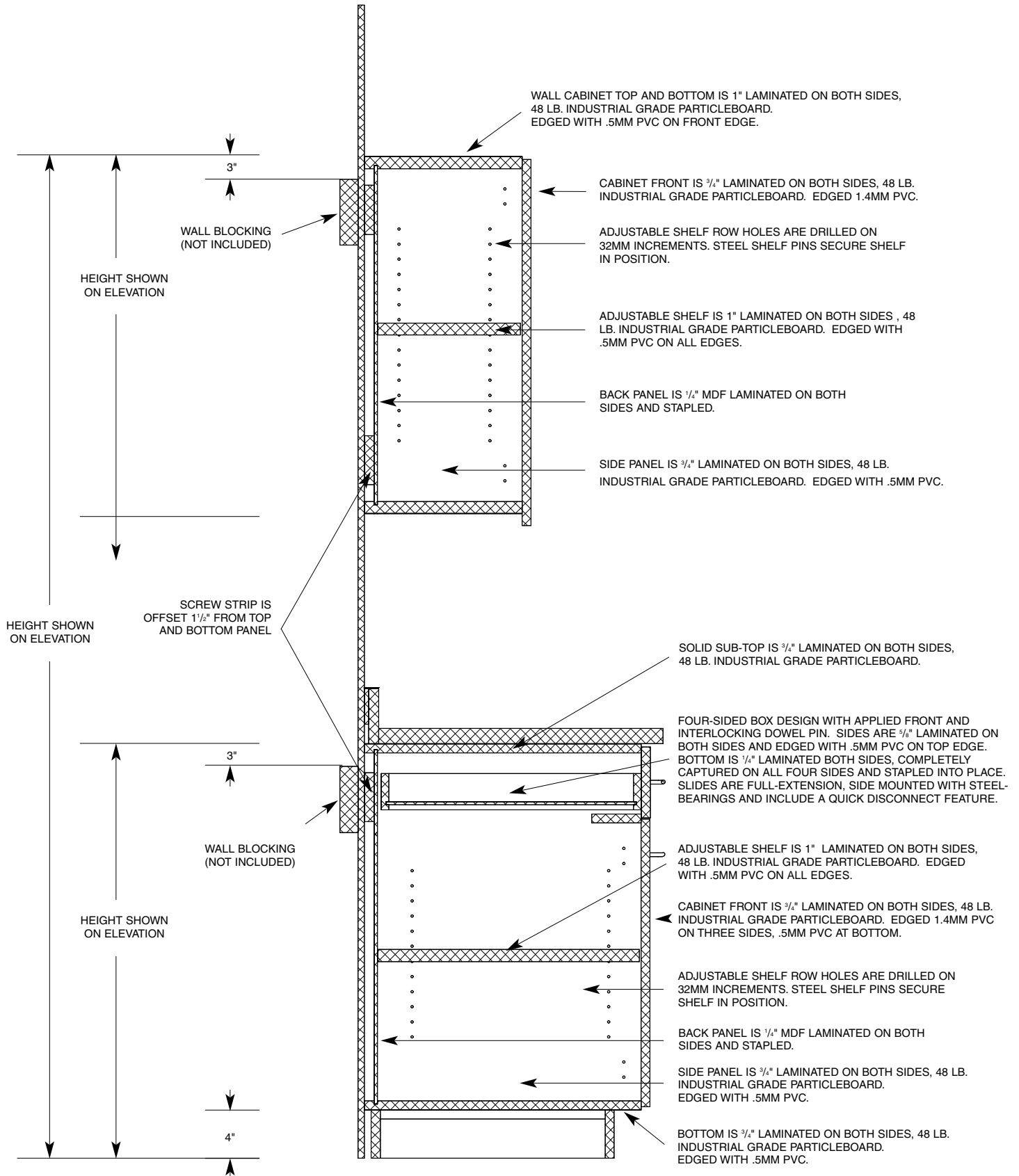
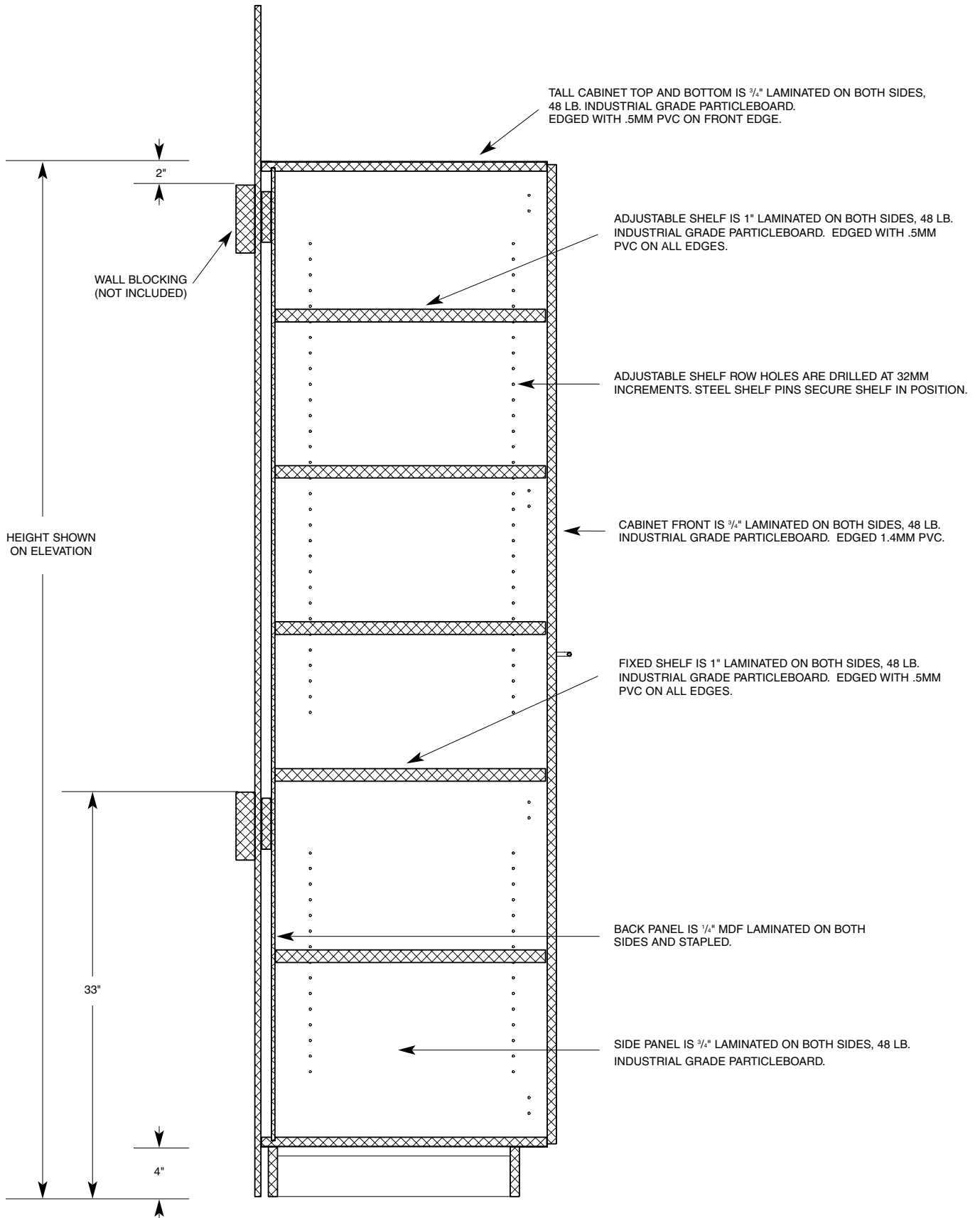


WALL/BASE CABINET – DESIGN GUIDE

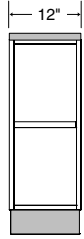


STORAGE CABINET – DESIGN GUIDE

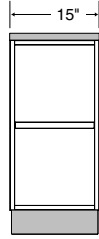


BASE CABINET DIMENSIONS

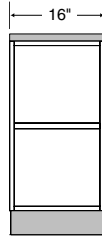
BASE CABINET WIDTHS – Front View



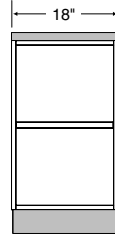
12"W – NOMINAL
WIDTH DIMENSIONS ARE EXACT



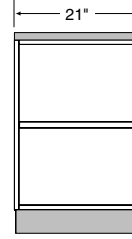
15"W – NOMINAL
WIDTH DIMENSIONS ARE EXACT



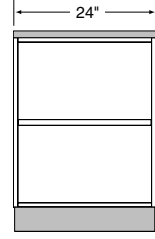
16"W – NOMINAL
WIDTH DIMENSIONS ARE EXACT



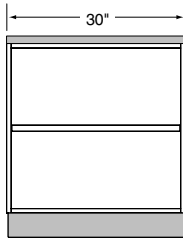
18"W – NOMINAL
WIDTH DIMENSIONS ARE EXACT



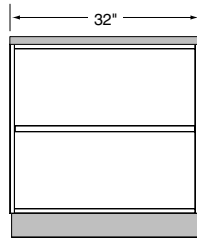
21"W – NOMINAL
WIDTH DIMENSIONS ARE EXACT



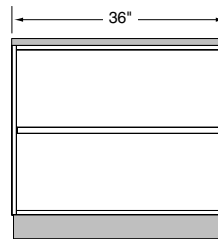
24"W – NOMINAL
WIDTH DIMENSIONS ARE EXACT



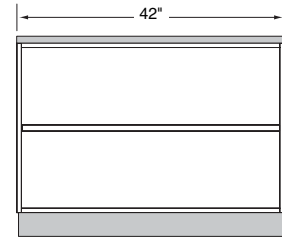
30"W – NOMINAL
WIDTH DIMENSIONS ARE EXACT



32"W – NOMINAL
WIDTH DIMENSIONS ARE EXACT

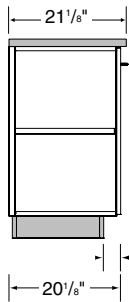


36"W – NOMINAL
WIDTH DIMENSIONS ARE EXACT

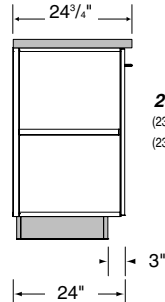


42"W – NOMINAL
WIDTH DIMENSIONS ARE EXACT

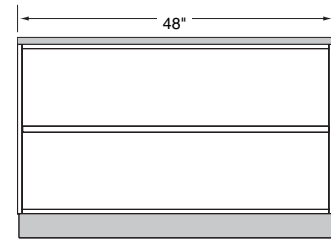
BASE CABINET DEPTHS – Side View



20"D – NOMINAL
(19 1/2" ACTUAL DEPTH DIMENSION W/O DOOR)
(20 1/8" ACTUAL DEPTH DIMENSION W/DOOR)



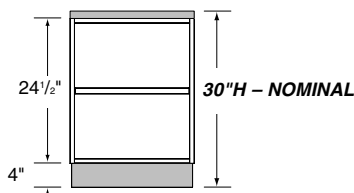
24"D – NOMINAL
(23 1/2" ACTUAL DEPTH DIMENSION W/O DOOR)
(23 1/4" ACTUAL DEPTH DIMENSION W/DOOR)



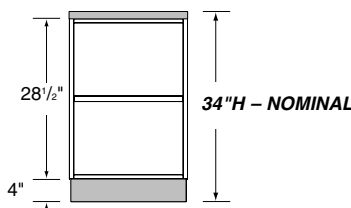
48"W – NOMINAL
WIDTH DIMENSIONS ARE EXACT

BASE CABINET HEIGHTS – Front View

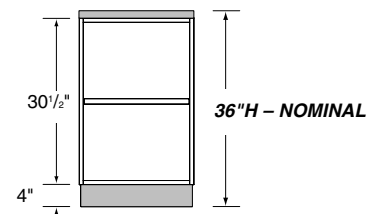
Nominal height includes a 4" high base and 1 1/2" thick countertop



30"H – NOMINAL



34"H – NOMINAL

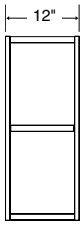


36"H – NOMINAL

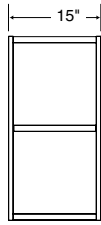
ADA BASE CABINET

WALL CABINET DIMENSIONS

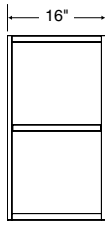
WALL CABINET WIDTHS – Front View



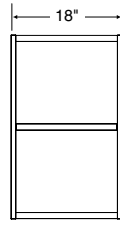
12"W – NOMINAL
WIDTH DIMENSIONS ARE EXACT



15"W – NOMINAL
WIDTH DIMENSIONS ARE EXACT



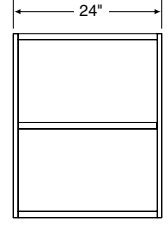
16"W – NOMINAL
WIDTH DIMENSIONS ARE EXACT



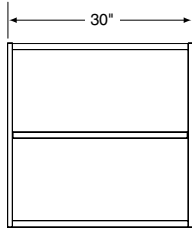
18"W – NOMINAL
WIDTH DIMENSIONS ARE EXACT



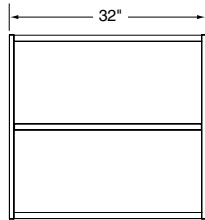
21"W – NOMINAL
WIDTH DIMENSIONS ARE EXACT



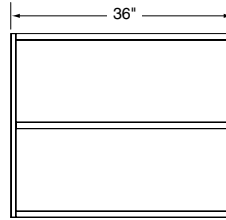
24"W – NOMINAL
WIDTH DIMENSIONS ARE EXACT



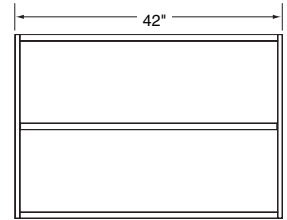
30"W – NOMINAL
WIDTH DIMENSIONS ARE EXACT



32"W – NOMINAL
WIDTH DIMENSIONS ARE EXACT

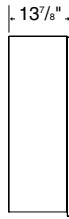


36"W – NOMINAL
WIDTH DIMENSIONS ARE EXACT

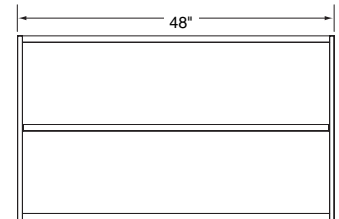


42"W – NOMINAL
WIDTH DIMENSIONS ARE EXACT

WALL CABINET DEPTH – Side View

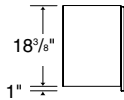


14"D – NOMINAL
(13 1/2" ACTUAL DEPTH DIMENSION W/O DOOR)
(13 1/4" ACTUAL DEPTH DIMENSION W/DOOR)

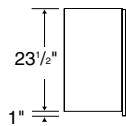


48"W – NOMINAL
WIDTH DIMENSIONS ARE EXACT

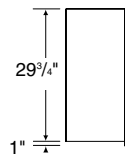
WALL CABINET HEIGHTS – Side View



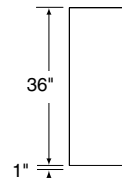
18"H – NOMINAL



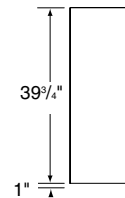
24"H – NOMINAL



30"H – NOMINAL



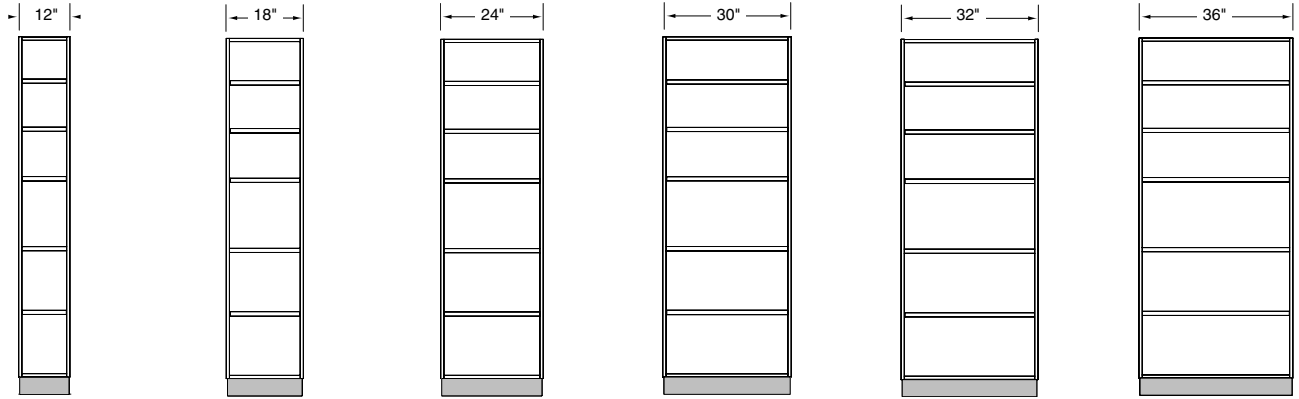
36"H – NOMINAL



40"H – NOMINAL

TALL CABINET DIMENSIONS

TALL CABINET WIDTHS – Front View
Fixed shelf is at 36"H.



12"W – NOMINAL
WIDTH DIMENSIONS ARE EXACT

18"W – NOMINAL
WIDTH DIMENSIONS ARE EXACT

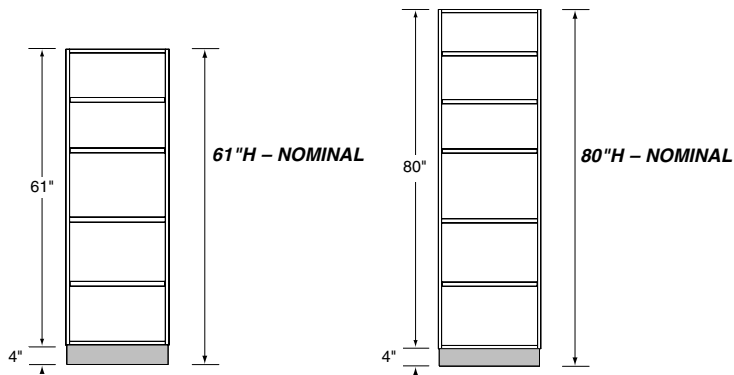
24"W – NOMINAL
WIDTH DIMENSIONS ARE EXACT

30"W – NOMINAL
WIDTH DIMENSIONS ARE EXACT

32"W – NOMINAL
WIDTH DIMENSIONS ARE EXACT

36"W – NOMINAL
WIDTH DIMENSIONS ARE EXACT

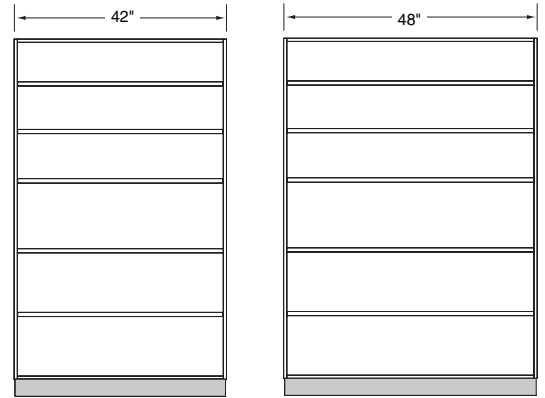
TALL CABINET HEIGHTS – Front View
Nominal height includes a 4" high base



61"H – NOMINAL

80"

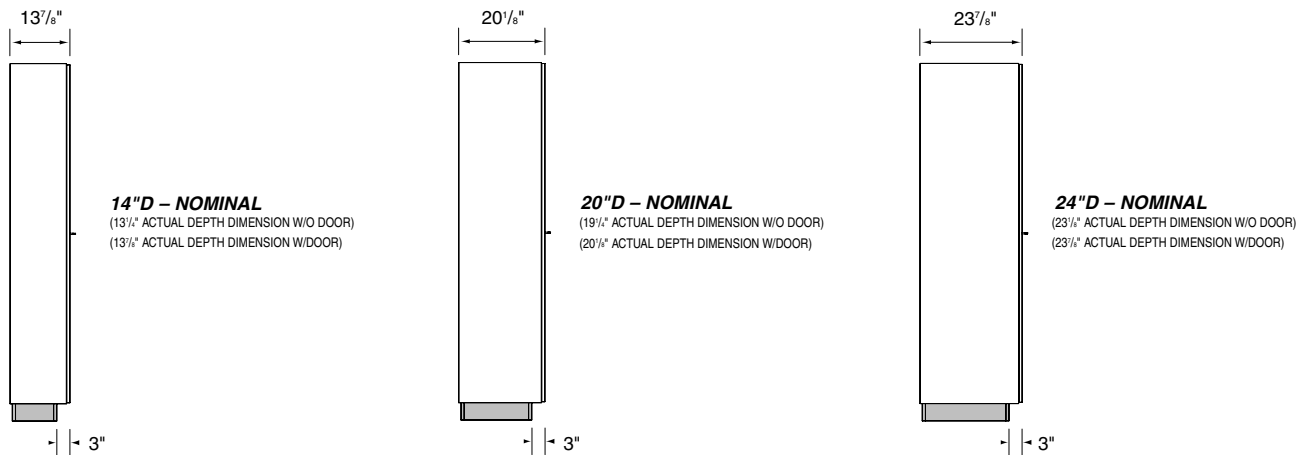
80"H – NOMINAL



42"W – NOMINAL
WIDTH DIMENSIONS ARE EXACT

48"W – NOMINAL
WIDTH DIMENSIONS ARE EXACT

TALL CABINET DEPTHS – Side View



14"D – NOMINAL
(13 7/8" ACTUAL DEPTH DIMENSION W/O DOOR)
(13 3/4" ACTUAL DEPTH DIMENSION W/DOOR)

20"D – NOMINAL
(19 1/2" ACTUAL DEPTH DIMENSION W/O DOOR)
(20 1/4" ACTUAL DEPTH DIMENSION W/DOOR)

24"D – NOMINAL
(23 1/4" ACTUAL DEPTH DIMENSION W/O DOOR)
(23 3/8" ACTUAL DEPTH DIMENSION W/DOOR)

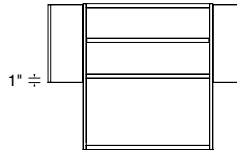
SPECIALTY WALL CABINETS

MICROWAVE CABINET

32"W – NOMINAL (WIDTH DIMENSIONS ARE EXACT)
14"D – NOMINAL (DEPTH DIMENSIONS W/O MICROWAVE SHELF ARE EXACT)

AVAILABLE 36"H AND 40"H
36"H – NOMINAL (HEIGHT DIMENSIONS ARE EXACT)
40"H – NOMINAL (39 3/4" ACTUAL HEIGHT DIMENSIONS)

100360 - Front View



OPENING – 12"D
 DOOR EXTENDS 1"
 BELOW FIXED SHELF



(36"H SHOWN)

CABINET OPENING FOR MICROWAVE IS:

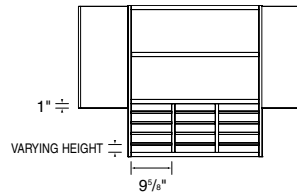
30 1/2"W x 15 1/2"H x 15 1/2"D
 (MICROWAVE SHELF IS 15 1/2"D)

FORM HOLDER CABINET

32"W – NOMINAL (WIDTH DIMENSIONS ARE EXACT)
14"D – NOMINAL (DEPTH DIMENSIONS ARE EXACT)

AVAILABLE 36"H AND 40"H
36"H – NOMINAL (HEIGHT DIMENSIONS ARE EXACT)
40"H – NOMINAL (39 3/4" ACTUAL HEIGHT DIMENSIONS)

100366 - Front View
 (36"H SHOWN)



OPENING – 12"D
 1/2" REMOVABLE
 HORIZONTAL DIVIDERS
 DOOR EXTENDS 1"
 BELOW FIXED SHELF



(40"H SHOWN)

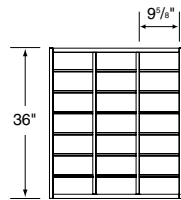
36"H – FIFTEEN OPENINGS

40"H – TWELVE OPENINGS

MAIL STORAGE CABINET

32"W – NOMINAL (WIDTH DIMENSIONS ARE EXACT)
14"D – NOMINAL (13 1/2" ACTUAL DEPTH DIMENSIONS)

100340 - Front View



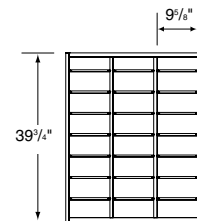
VARYING HEIGHTS
 (APPROX. 5")
36"H – NOMINAL
 TWENTY-ONE OPENINGS
 OPENING – 12"D
 1/2" REMOVABLE
 HORIZONTAL DIVIDERS



MAIL STORAGE CABINET

32"W – NOMINAL (WIDTH DIMENSIONS ARE EXACT)
14"D – NOMINAL (13 1/2" ACTUAL DEPTH DIMENSIONS)

100341 - Front View



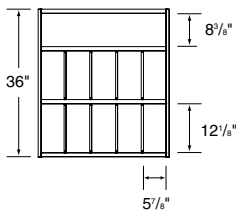
VARYING HEIGHTS
 (APPROX. 5")
40"H – NOMINAL
 TWENTY-FOUR OPENINGS
 OPENING – 12"D
 1/2" REMOVABLE
 HORIZONTAL DIVIDERS



LATERAL ORGANIZER CABINET

32"W – NOMINAL (WIDTH DIMENSIONS ARE EXACT)
14"D – NOMINAL (13 1/2" ACTUAL DEPTH DIMENSIONS)

100335 - Front View



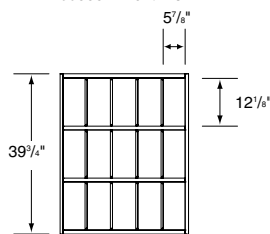
36"H – NOMINAL
 ELEVEN OPENINGS
 OPENING – 12"D
 1/2" REMOVABLE
 VERTICAL DIVIDERS



LATERAL ORGANIZER CABINET

32"W – NOMINAL (WIDTH DIMENSIONS ARE EXACT)
14"D – NOMINAL (13 1/2" ACTUAL DEPTH DIMENSIONS)

100336 - Front View



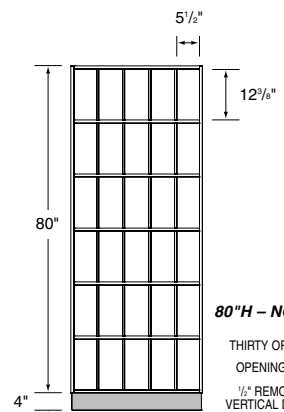
40"H – NOMINAL
 FIFTEEN OPENINGS
 OPENING – 12"D
 1/2" REMOVABLE
 VERTICAL DIVIDERS



LATERAL ORGANIZER CABINET

32"W – NOMINAL (WIDTH DIMENSIONS ARE EXACT)
14"D – NOMINAL (13 1/2" ACTUAL DEPTH DIMENSIONS)

100430 - Front View



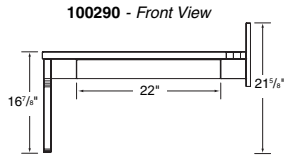
80"H – NOMINAL
 THIRTY OPENINGS
 OPENING – 12"D
 1/2" REMOVABLE
 VERTICAL DIVIDERS



SPECIALTY WALL CABINETS

PRESCRIPTION DESK

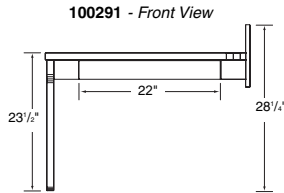
34"W – NOMINAL (34¹/₈" ACTUAL WIDTH DIMENSION)
16"D – NOMINAL (16¹/₈" ACTUAL DEPTH DIMENSION)
17"H – NOMINAL (16¹/₈" ACTUAL HEIGHT DIMENSION)



DRAWER IS 24"W

PRESCRIPTION DESK

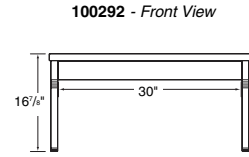
34"W – NOMINAL (34¹/₈" ACTUAL WIDTH DIMENSION)
23"D – NOMINAL (23¹/₈" ACTUAL DEPTH DIMENSION)
23"H – NOMINAL (23¹/₈" ACTUAL HEIGHT DIMENSION)



DRAWER IS 24"W

PRESCRIPTION DESK

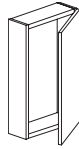
34"W – NOMINAL (34¹/₈" ACTUAL WIDTH DIMENSION)
17"D – NOMINAL (16¹/₈" ACTUAL HEIGHT DIMENSION)
17"H – NOMINAL (16¹/₈" ACTUAL HEIGHT DIMENSION)



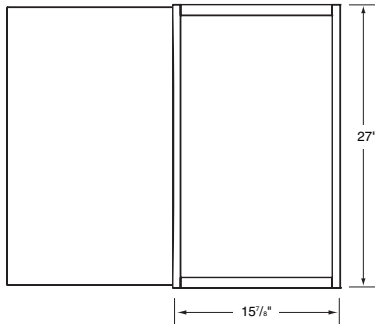
DRAWER IS 30"W

LASER CABINET

16"W – NOMINAL (15¹/₈" ACTUAL WIDTH DIMENSION)
5"D – NOMINAL (5¹/₈" ACTUAL DEPTH DIMENSION)
27"H – NOMINAL (HEIGHT DIMENSIONS ARE EXACT)

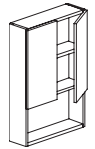


100374 - Front View

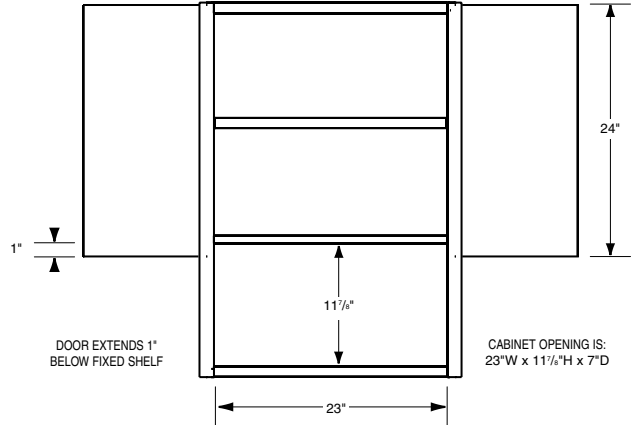


TOILET WALL CABINET

24"W – NOMINAL (WIDTH DIMENSIONS ARE EXACT)
7"D – NOMINAL (6¹/₈" ACTUAL DEPTH DIMENSION W/O DOOR)
36"H – NOMINAL (36" ACTUAL HEIGHT DIMENSION)



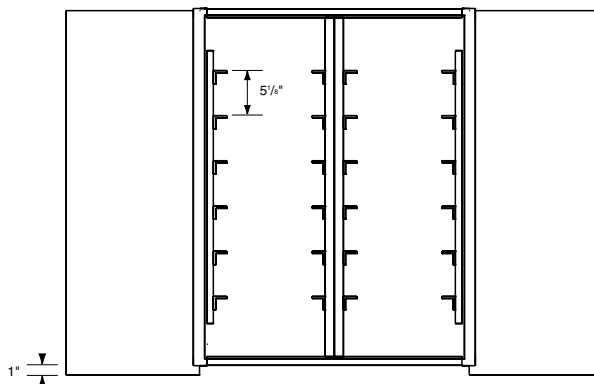
100357 - Front View



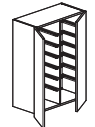
MOLD STORAGE CABINET

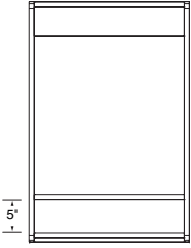
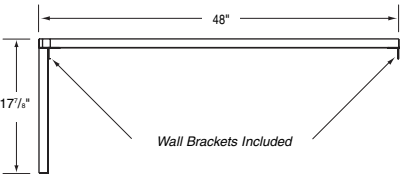
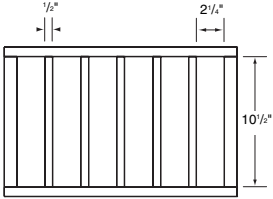
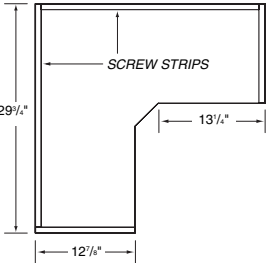
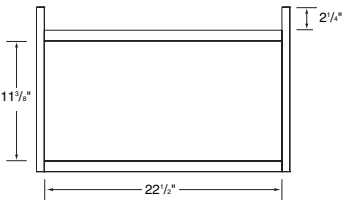
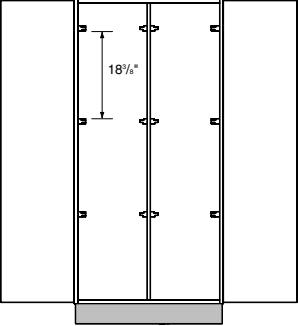
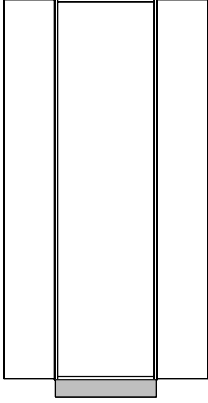
30"W – NOMINAL (30" ACTUAL WIDTH DIMENSION)
14"D – NOMINAL (DEPTH DIMENSIONS ARE EXACT)
40"H – NOMINAL (40" ACTUAL HEIGHT DIMENSION)

100370 - Front View



CABINET CAN BE INVERTED TO FIT SIEMENS AND VARIAN TRAYS



<p>TELEPHONE CABINET 24"W – NOMINAL (WIDTH DIMENSIONS ARE EXACT) 14"D – NOMINAL (13 1/2" ACTUAL DEPTH DIMENSION) 36"H – NOMINAL (36" ACTUAL HEIGHT DIMENSION)</p> <p>100371 - Front View</p>  <p>BOTTOM OPENING IS: 23"W x 5"H x 13 1/2"D</p>	<p>DRESSING BENCH 48"W – NOMINAL (48" ACTUAL WIDTH DIMENSION) 24"D – NOMINAL (DEPTH DIMENSIONS ARE EXACT) 18"H – NOMINAL (17 1/2" ACTUAL HEIGHT DIMENSION)</p> <p>100900 - Front View</p>  <p>Wall Brackets Included</p>	
<p>RECORDS PASS-THROUGH 18"W – NOMINAL (18 1/2" ACTUAL WIDTH DIMENSION) 12"D – NOMINAL (12 1/2" ACTUAL DEPTH DIMENSION) 12"H – NOMINAL (12" ACTUAL HEIGHT DIMENSION)</p> <p>100373 - Front View</p> 	<p>CORNER SHELF 30"W – NOMINAL (29 1/2" ACTUAL WIDTH DIMENSIONS) 30"D – NOMINAL (29 1/2" ACTUAL DEPTH DIMENSIONS) 1"H – NOMINAL (3 1/4" ACTUAL HEIGHT DIMENSION)</p> <p>100375 - Front View</p>  <p>SCREW STRIPS</p>	<p>WALL SHELF 24"W – NOMINAL (22 1/2" ACTUAL WIDTH DIMENSIONS) 11"D – NOMINAL (10 1/2" ACTUAL DEPTH DIMENSIONS) 16"H – NOMINAL (15 1/2" ACTUAL HEIGHT DIMENSION)</p> <p>100372 - Front View</p> 
<p>CONE STORAGE CABINET 30"W – NOMINAL (30" ACTUAL WIDTH DIMENSION) 24"D – NOMINAL (23 1/2" ACTUAL DEPTH DIMENSION) 61"H – NOMINAL (HEIGHT DIMENSIONS ARE EXACT)</p> <p>100420 - Front View</p>  <p>CABINET CAN BE INVERTED TO FIT SIEMENS AND VARIAN TRAYS</p>	<p>SCOPE CABINET 24"W – NOMINAL (WIDTH DIMENSIONS ARE EXACT) 14"D – NOMINAL (13 1/2" ACTUAL DEPTH DIMENSION) 89"H – NOMINAL (88 1/2" ACTUAL HEIGHT DIMENSION)</p> <p>100410 - Front View</p>  <p>SCOPE MOUNTING BRACKET AND SHELF BY OTHERS</p>	